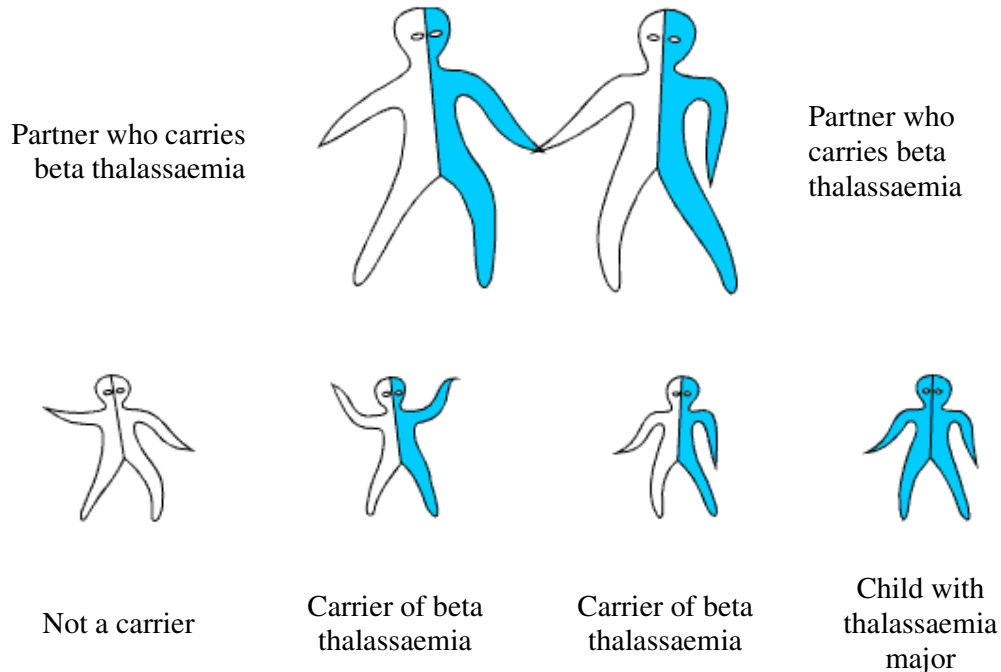


Implications for a Child when Both Partners carry Beta Thalassaemia

This couple could have a child with beta thalassaemia major.



In each pregnancy, there are three possibilities:

- The child may not carry any haemoglobin disorder.
- The child may carry beta thalassaemia. This is harmless.
- The child may inherit beta thalassaemia from both parents. The child would have a serious inherited anaemia called ***beta thalassaemia major***.

In each pregnancy there is a 3 out of 4 chance of a healthy child, and a 1 out of 4 risk of child with beta thalassaemia major.

Beta thalassaemia major...

... is a severe anaemia that starts between 6 months and 1 year of age. Most affected people need a blood transfusion every month, for life, and other medical treatments. A few people who inherit beta thalassaemia from both parents have a milder anaemia and may manage without blood transfusions.

We cannot reliably predict which couples could have children with severe or milder thalassaemia.

[It is possible to test a baby for beta thalassaemia major early in pregnancy.](#) This couple should see an expert counsellor in haemoglobin disorders to discuss their options, before starting a pregnancy, or as early in pregnancy as possible.